

Cub Scout Pack 229

Chartered to:

**Tafton Fire Company
Tafton, PA**

Affiliated with:

**Dan Beard District
Northeastern Pennsylvania Council
Boy Scouts of America**



Pack Family Handbook

Version 4.0

Updated September 2020

The following policies are intended to serve as rules of execution for all Cub Scout Pack 229 business and functions. Please read this manual carefully and in its entirety. This is a “living document” and may need modifications or improvements depending on the current environment of Scouting and Cub Scout Pack 229.

Where referenced in this manual and unless specified otherwise:

- A) ‘Parent’ refers to a parent or legal guardian of a child. It can also refer to another adult (over 18 years) that has been designated as a ‘Scout Escort’ with prior consent from parent, such as a grandparent, step-parent, etc.
- B) ‘Cub Scout’ refers to the registered youth scout in grades 1-5.
- C) Exceptions to any rule needs to be discussed with the Committee Chairman or Cubmaster. Appeals to be made to the Pack Committee.
- D) “Boy Scouts of America” and “BSA” both refer to the national organization which oversees the following programs:
 - a. Cub Scouts
 - b. Scouts BSA (the new name of the “Boy Scouts” program)
 - c. Venturing
 - d. Exploring
- E) ‘Leader’ refers to the Cubmaster, Assistant Cubmaster, Den Leader, Assistant Den Leader, Den Chief, Committee Member, or designated adult.

CONTENTS:

| | |
|--|----|
| WELCOME | 4 |
| PURPOSE | 4 |
| DECLARATION OF EQUALITY | 5 |
| DECLARATION OF RELIGIOUS PRINCIPLE | 6 |
| CODE OF CONDUCT | 6 |
| DISCIPLINE PROCESS | 9 |
| UNIFORM REQUIREMENTS | 10 |
| CALENDAR | 12 |
| DUES & ACTIVITY FEE | 12 |
| PARENT PARTICIPATION | 14 |
| LEADERSHIP | 15 |
| LEADER TRAINING & CLEARANCES | 16 |
| MEETINGS | 16 |
| CAMPING | 18 |
| COMMUNITY SERVICE | 18 |
| AWARDS & ADVANCEMENT | 18 |
| FINANICAL AID and CAMPERSHIPS | 19 |

WELCOME

Welcome to Cub Scouting and Pack 229! The Committee, Leaders and Charter Organization of the Pack hope the time you and your child spend progressing through the Cub Scout ranks towards Scouts BSA will be enjoyable and rewarding.

As Cub Scouts is a family program, parental participation is important to the Cub Scouts individually and to the Pack as a whole. Enrolling your child in Pack 229 is not only getting them into Scouting – it is making a personal commitment to help them get the most out of Scouting.

PURPOSE

Cub Scouting in Pack 229 is open to youth in kindergarten through 5th grade and their parents. Cub Scouting provides an environment designed to build qualities of moral strength and character, train the scout in the responsibilities of citizenship and develop physical, mental and emotional fitness.

Parents, leaders and our Charter Organization, the Tafton Fire Company, work together to achieve the following:

- Influence the development of character
- Encourage spiritual growth
- Develop habits of good citizenship
- Encourage good sportsmanship and pride in a strong mind and body
- Improve understanding within the family
- Strengthen the ability to get along with others
- Foster a sense of personal achievement by developing new interests and skills
- Learn how to be helpful and do one's best
- Provide fun and exciting activities
- Prepare the Cub Scouts to become Boy Scouts

As a chartered member of the Boys Scouts of America, the Northeast Pennsylvania Council and the Dan Beard District, we are subject to their rules and regulations. We also support and participate in the training, leadership and activities they provide.

Since spiritual, physical and mental growth are our main goals in Cub Scouting, we prohibit those activities which will not meet these goals. The BSA prohibits the following:

- 1:1 contact between youth and adults (except for child & parent). There must be 2 adults present.
 - If female Scouts are present, a female leader must be present.

- In limited cases, a minimum one adult with two or more youth. But two adults should be present in the majority of cases.
- Physical, mental, verbal or sexual abuse
- Use of drugs or alcohol. (Prescriptions administered with adult supervision will be permitted)
- Use of explosives or fireworks
- Use of firearms. (Except as a supervised achievement activity)
- Conduct unbecoming a Scout, or detrimental to the goals of Pack 229 and the BSA, will not be tolerated.

DECLARATION OF EQUALITY



In July 2015, The Boy Scouts of America ratified a resolution removing the national restriction on openly gay leaders and employees. To quote the resolution...

“This change allows Scouting's members and parents to select local units, chartered to organizations with similar beliefs, that best meet the needs of their families. This change would also respect the right of religious chartered organizations to continue to choose adult leaders whose beliefs are consistent with their own.”

As our Pack is run by the Tafton Fire Company, a civil organization, we were able to welcome this change and declare that we not only tolerate diversity, but openly embrace it.

In addition, with a unanimous Pack Committee vote, Cub Scout Pack 229 was the first Pack in the state of Pennsylvania to register on the Scouts for Equality map.

Scouts for Equality is a separate 501(c3) not for profit organization committed to ensuring that the Boy Scouts of America continues to be an organization that contributes positively to the lives of America's young people. As Scouts, leaders, parents, volunteers, and supporters, we believe that inclusion and mutual respect are traditional Scouting values integral to building character, developing leadership, and promoting good citizenship.

For our efforts in promoting diversity, Cub Scout Pack 229 has received the Scouts for Equality's Gold Inclusive Scouting Award.

To be clear, Cub Scout Pack 229 openly welcomes all scouts, parents, adult volunteers and supporters without regard to race, religion, national origin, mental/physical different-ability (disability), veteran status, marital status, sexual orientation, age (unless BSA specified) or gender.

DECLARATION OF RELIGIOUS PRINCIPLE

In its Charter and Bylaws, the BSA maintains that no member can grow into the best kind of citizen without recognizing an obligation to God or higher power. Scouting recognizes faith and spirituality outside of a specific religion. No matter what the religious faith of a member might be, this fundamental need of good citizenship must be kept before the member.

- The BSA does not define what constitutes a belief in God or the practice of religion/faith.
- The BSA does not require membership in a religious organization or association in order to join Scouting but strongly encourages membership and participation in the religious program and activities of a church, synagogue, or other religious association.
- The BSA respects the convictions of those who exercise their constitutional freedom to practice religion as individuals without formal membership in religious organizations.
- When a Scouting unit is associated with a church or other distinctly religious organization, no members of other denominations or faith shall be required, because of membership in the unit, to take part in or observe a religious ceremony distinctly unique to that organization or church.
- Only people willing to subscribe to these declarations of principles shall be entitled to certificates of leadership in carrying out the Scouting program.
- All members of the BSA should show respect towards the beliefs of others.

CODE OF CONDUCT

Cub Scouts and families must live by the Scout Oath and Scout Law.

The Cub Scout program is a privilege, not a right, for those youth and their parents willing to accept the high standards of Scouting. The Pack's Code of Conduct is necessary to ensure that Scouting's high ideals are fulfilled by all participants.

Rules

To ensure everyone is safe, a core set of rules has been established which must be followed by each scout, sibling, and parent. Some of these rules are based upon BSA, others are meant to ensure respect to our meeting places for use of their facilities, and the rest are simply common sense and good manners that we expect from our scout families.

1. Youth Protection
 - a. All leaders undergo background checks and Youth Protection Training before working with youth.
 - b. At least two leaders must stay with the scouts at all times.
 - c. Any electronic communication between a leader and a Scout (i.e. email, text, or chat) must include a parent (preferably) or another leader.
 - d. A female adult leader must be present whenever female Scouts are present.

- e. Per the “Guide to Safe Scouting”, when camping, no one is permitted to sleep with a person of the opposite sex or an adult other than his or her own spouse, parent, or guardian.
2. Parent Responsibilities
- a. Cub Scouts in grades K-3 (Lion, Tiger, Wolf, and Bear) must have a parent stay with them at all scouting events, except “sleep away” Camp Acahela.
 - b. Cub Scouts in grades 4 and 5 (Webelos and Arrow of Light) may be dropped off at their den meeting and picked up promptly afterwards.
 - i. A sign-in sheet must be signed, with the phone number of a parent or responsible adult who can be reached during the meeting or event.
 - ii. Scouts must be picked up promptly at the end of the meeting or event.
 - iii. The Key 3 Leaders reserve the right to revoke the drop off policy for any Scout.
 - c. All parents will need to attend the monthly Pack Night meetings with their scout.
 - d. Each scout will need to have a parent stay with them on an overnight event, except “Sleep Away” Camp Acahela.
 - e. Parents should be prompt when bringing your scout to meetings and events so leaders will know you are safe and your scout enjoys the full scouting program.
 - f. Parents are required to stay with their scout at all events, fundraisers, and service projects unless permission is granted by the leader running the event. If this permission is granted, another parent must then take on the your role of oversight and discipline for your scout. The leader cannot watch your scout as they are responsible for the safety and well-being of all scouts at said event.
3. Respect yourself and your privacy. Youth and adults must work to not expose themselves to a breach of privacy. Use of the restrooms/shower or changing of clothes **MUST** be done in private. Specific youth/adult and male/female adult bathroom or shower usage times may be established if separate facilities are not available by age and gender.
4. Respect the opinions and beliefs of others. (This includes religious, social, political, etc.)
5. Instructions given by the Leader must be followed by all scouts, parents, and any siblings that may be present at a scouting event. Disagreements between adults must be handled with decorum and away from all scouts.
6. Respect the designated meeting place and follow the “Leave No Trace” guidelines.
- a. When meeting at the Wallenpaupack North Primary School, our building usage agreement permits the use of the science room and the cafeteria.
 - i. Loitering in the hallways is not permitted.
 - ii. Other areas of the school (gym, computer lab, etc.) are **OFF LIMITS** unless there is prior written permission from the school.
 - iii. Computers and other school property (including supplies such as paper and pencils) are **OFF LIMITS**, unless there is prior written permission from the school.
 - iv. Cafeteria

1. Tables are to be moved ONLY by janitorial staff. DO NOT move tables on your own.
 2. Playing under or behind tables folded tables is NOT PERMITTED by the school, as it presents a safety risk.
 3. Climbing in/on coolers, cabinets, or other school equipment is NOT PERMITTED.
 - b. When meeting at the Paupack Methodist Church, the main basement meeting room should be used unless otherwise specified by the leader.
 - c. Regardless of location, Scouts will work together to leave the meeting place (including bathroom) as clean as, or cleaner than, it was found at the beginning of the meeting.
 - i. Chairs and tables should be returned to the configuration they were in before the scout meeting began.
 - ii. Trash must be disposed of properly.
 - iii. Any messes that we made, we need to clean up.
7. Scouts must use the buddy system at all times, when out of line of sight of a leader/parent.
- a. During a meeting, the only reason a Scout should leave the meeting room is for the restroom – and must always use the Buddy System.
 - b. What qualifies as “the Buddy System”?
 - i. Two same-gender youth
 - ii. A mixed gender group of three or more youth
 - iii. Generally, no more than a two year age gap
8. Electronic devices
- a. No electronic devices are permitted to be in the Cub Scouts’ hands at Scouting events, unless directed to by a leader. The purpose of the program is to encourage the Cub Scouts to interact with others and electronic devices are counterproductive to that goal.
 - b. We ask that parents must limit their electronic device usage to ‘emergency communications only’ or to take pictures of the Scouts, to set a good example.
9. BSA Health/Safety Form “Informed Consent, Release Agreement and Authorization” must be completed annually and personal contact information must be kept up to date. The Cubmaster and Den Leader should be made aware of any severe allergy, special needs, or custody issues the Scout may have.
10. Photographs, press, and social media
- a. Pictures taken at Scouting events may be published in the local newspaper or public social media by a member of the Press or the Pack Committee.
 - i. The required “Informed Consent, Release Agreement and Authorization” form includes the BSA media release.
 - ii. If you do not wish your child’s photo to be taken, a written request must be submitted to the Pack Committee and our best efforts will be made to accommodate the request.

- b. Pack 229 closed Facebook group
 - i. Pictures of anyone attending a Scouting event may be posted by leaders or parents on the Pack 229 Families Facebook group.
 - c. Personal social media
 - i. If you post pictures to personal or public social media profiles (i.e. people outside of the Pack will see these pictures), you need permission of anyone in the photo.
11. Certain events, like summer camp, may have additional rules and policies, which will be made available before the event.
12. Smoking
- a. School Policy: There is NO SMOKING anywhere on school property.
 - b. BSA policy, for events/meetings at other locations: If you need to smoke at a scouting event that is off school campus it must be done out of eyesight of the youth and you must properly dispose of any remains.

DISCIPLINE PROCESS

Pack discipline is meant to ensure the safety and best interest of all our Cub Scouts and families. Discipline at Pack and Den events is at the discretion of the Leaders in accordance with the following guidelines:

Failure to obey a rule or instruction given by the Leader will result in the following action:

- First warning: a verbal instruction
- Second warning: a time-out or removal from an activity. In the case of dangerous behavior, a Cub Scout leader may skip the first warning.
- Third warning: Parents will be asked to remove a Cub Scout from the remainder of the activity
- In the case of repetitive behavior problems, Cub Scout leaders may ask parents to participate more directly with their Cub Scout in Den or Pack functions.
- Leaders have the right to excuse any Cub Scout or family member from Scouting events for reasons of continuing misconduct or distraction. The situation will then be reviewed by the Pack Committee and a remedy plan established. In extreme cases, the Cub Scout may be expelled from the Pack or the family member may not be permitted to attend Scouting events.
- Cub Scout siblings are welcome at many of Pack 229 functions, but parents are responsible for the conduct of their non-Cub Scout children at all times. Parents may be asked to bring a quiet activity for the sibling or remove disruptive children from Scouting events if needed.

Inappropriate behavior consists of (but is not limited to):

- Loud or excessive talking
- Behavior that disrupts speakers, skits, song or ceremonies
- Leaving assigned meeting area without permission
- Inappropriate or vulgar language
- Being disrespectful to Leaders, Parents, or other Scouts
- Conduct unbecoming to the Scout Oath and Law

ALCOHOL AND ILLEGAL DRUG CONSUMPTION AT SCOUTING EVENTS

It is the Policy of the Boy Scouts of America that under NO circumstances shall ANYONE attending a National, Council, District, Pack or any Scout sponsored event:

- Be under the influence of alcohol/illegal drugs
- Have in their possession any alcohol/illegal drugs
- Offer or allow the consumption of alcohol/illegal drugs by a minor

Anyone in violation of these rules will be suspended for 30 days, pending an expulsion review by the Pack Committee.

NOTE: No adult should ever drink or be under the influence while in BSA UNIFORM, ANYWHERE!

UNIFORM REQUIREMENTS

First and foremost, it is the policy of Pack 229 to not turn away a Scout from a meeting or event for lack of uniform.

That said, proper uniforming is strongly encouraged by the BSA and certain events require appropriate attire, even if the uniform is not able to be worn (i.e. a Scout banquet). In some larger events (i.e. camps and other council events), a Scout may feel out of place without a uniform.

Some financial assistance is available from Council for uniform shirts and the Pack occasionally has some hand-me-down uniforms available. If you are having difficulty purchasing a uniform, please contact the Cubmaster and they will see what options are available.

Leaders will advise when Class A uniforms should be worn and when you probably don't want to wear them (i.e. a messy project or physical activity). Other than that, it's up to you which to wear to an event.

Class A Uniform

You can purchase a uniform and handbook at the Council store in Moosic (Montage Mountain Road) or at ScoutStuff.org – we recommend going to the store and trying everything on, as the sizes can be a little odd.

- Uniform shirt
 - Lion – Blue or yellow Lion t-shirt
 - Tiger, Wolf, and Bear – Blue uniform shirt
 - Webelos, AOL, and Leaders – Tan uniform shirt
 - Blue shoulder loops
- Patches for uniform shirt (does not apply to Lion)
 - Council shoulder patch (Northeast PA Council)
 - World crest emblem (purple circle)
 - Pack numbers
 - DO NOT purchase a “229” – the Pack Committee has purchased custom Pack number patches. Every Scout and Leader will receive one of these when they join. Replacements may be purchased from the Pack Committee.
- Neckerchief and slide – specific to your Den
- Hat (optional) – Den specific
- Belt
 - Lion, Tiger, Wolf, and Bear – Navy blue
 - Note that these ranks use “belt loops” as awards for their adventures – these fit best on the official Cub Scout belt.
 - Webelos, AOL, and Leaders – Green
- Pants / shorts

Please note that sweatpants are never acceptable with the Class A uniform.

 - Lion, Tiger, Wolf, and Bear – Navy blue
 - Webelos, AOL, and Leaders – Green

A Rank specific handbook will also be required.

Class B Uniforms and Clothing

Class “B” uniforms are appropriate for any scouting or Pack activity where Class “A” uniform is not required.

At Den meetings or Pack events, any Scout-related t-shirt is considered a Class B uniform.

At larger events with other units, the Class “B” uniform shirt is a purple shirt with the Pack 229 logo on the front. If a Scout does not have a Pack 229 shirt, a similar purple shirt (i.e. Wallenpaupack School District) should be worn. This helps to identify our Scouts from others.

The Pack will be ordering Class B shirts as needed – typically in the fall and spring.

All clothing worn by Scouts, Leaders, and family members at any scout event must be ‘scout appropriate’ and modest. For swimming events, this generally means that speedos or bikinis should be covered with shorts or a shirt/tanktop. For females, modest two piece swimsuits are allowed.

CALENDAR

The “**Scout Year**” runs from June to May. In other words, June 1st is when Scouts can begin working on their next rank (i.e. a Scout who is finishing up first grade can begin working on their Wolf requirements on June 1st).

Den meeting schedules typically follow the school year (September through May). Check with your Den Leader for specifics.

We also run monthly activities over the summer, but Den meetings typically aren’t held, unless a particular Den is working on something optional.

DUES & ACTIVITY FEE

All dues and fees can be covered by direct payment (cash, check, PayPal) or via fundraising. A credit card may be used via PayPal, but you will be charged an extra fee.

Pack awards and participation in pack events may be withheld if Annual Dues and/or Activities Fee are not paid by the due dates. It is not the intent of this policy to exclude any Scout from any activity, therefore, special arrangements, such as payment plans, are available upon request and must be approved by the “Key 3” Leaders (Cubmaster, Committee Chair, and Charter Organization Representative) – it is the parent’s responsibility to communicate with one of these leaders.

Annual Dues

For the 2020-21 school year, annual dues and registration fees total to \$133 – this covers National, Council (the Northeast PA regional Scouting organization), and Pack costs.

We split these fees into two payments:

November: \$68

February: \$65

For New Scouts – fees will be prorated depending on when you join. Please note that, as of August 2020, the National BSA organization has also implemented a one-time joining fee of \$25.

There are fundraisers throughout the year to help defray costs. Any additional money from fundraising will be deposited to the Scout's "scout account," which can be used to help pay for their camp registrations and other costs.

Financial aid may be available for those who qualify. (Please see section on FINANCIAL AID and CAMPERSHIPS for full details.)

Boys' Life Magazine

Boys' Life is the official magazine of Cub Scouts. Annual subscriptions are optional and can be purchased for \$12 for the year.

Fundraising

Fundraising helps teach the Cub Scout responsibility by learning to help pay his/her own way. It also helps to improve his/her confidence and social skills. There are many different fundraising activities to choose from. For example, Pack 229 sells popcorn and candy cars and also hosts a car wash.

Insurance

If a registered Scout or Leader is ever injured during a scouting event, the BSA will cover most out-of-pocket expenses after personal insurance is exhausted (such as co-pays, etc.). Details are available upon request.

Scout Accounts

Any money that is paid for a Scout or money that they earn fundraising is added to their "Scout Account" in Scoutbook. When the time comes, dues and fees will be deducted from this account.

Any funds that are left in their account, after dues and fees, can be used for other Scout-related expenses, such as camp fees, uniforms, books, etc.

In order to use Scout account funds, you can either:

- Ask the Cubmaster to pick up items from the Scout shop and use Scout Account funds
- Purchase items on your own and submit receipts to the Cubmaster – a check will be cut by the Pack Treasurer (please give up to a month for reimbursement).

These funds can only be used for Scout-related items. To avoid any confusion, it's best to check with the Cubmaster before purchasing items for which you intend to be reimbursed.

If a Scout decides to leave Pack 229 (or is dismissed), all funds will be forfeit to the Pack General Fund. If a Scout transfers to another Scout unit, the funds may be able to be transferred to the other unit, depending on 501(c)(3) rules and the agreement of the other Scout unit.

PARENT PARTICIPATION

Scouting is for your child. However, without your help, Pack 229 would not be able to provide them with a quality program or experience.

It is our policy to require one parent to participate as a Leader, committee member, assistant or volunteer if your Scout is to remain a member of the Pack.

Volunteering as a Leader will give you an opportunity to fully appreciate Scouting, as well as share your knowledge and make a direct impact on our Scouts. Training materials will be provided for you.

Volunteering as a Committee Member gives you a 'vote' on how the pack is run. Committee Members will be required to attend the monthly committee meetings (held before Pack Night) and help where needed.

In addition to Leaders and Committee Members, other volunteers are always needed. We are always looking for parents who can share special talents or volunteer at an event, pickup supplies, or lend a hand at a meeting or event.

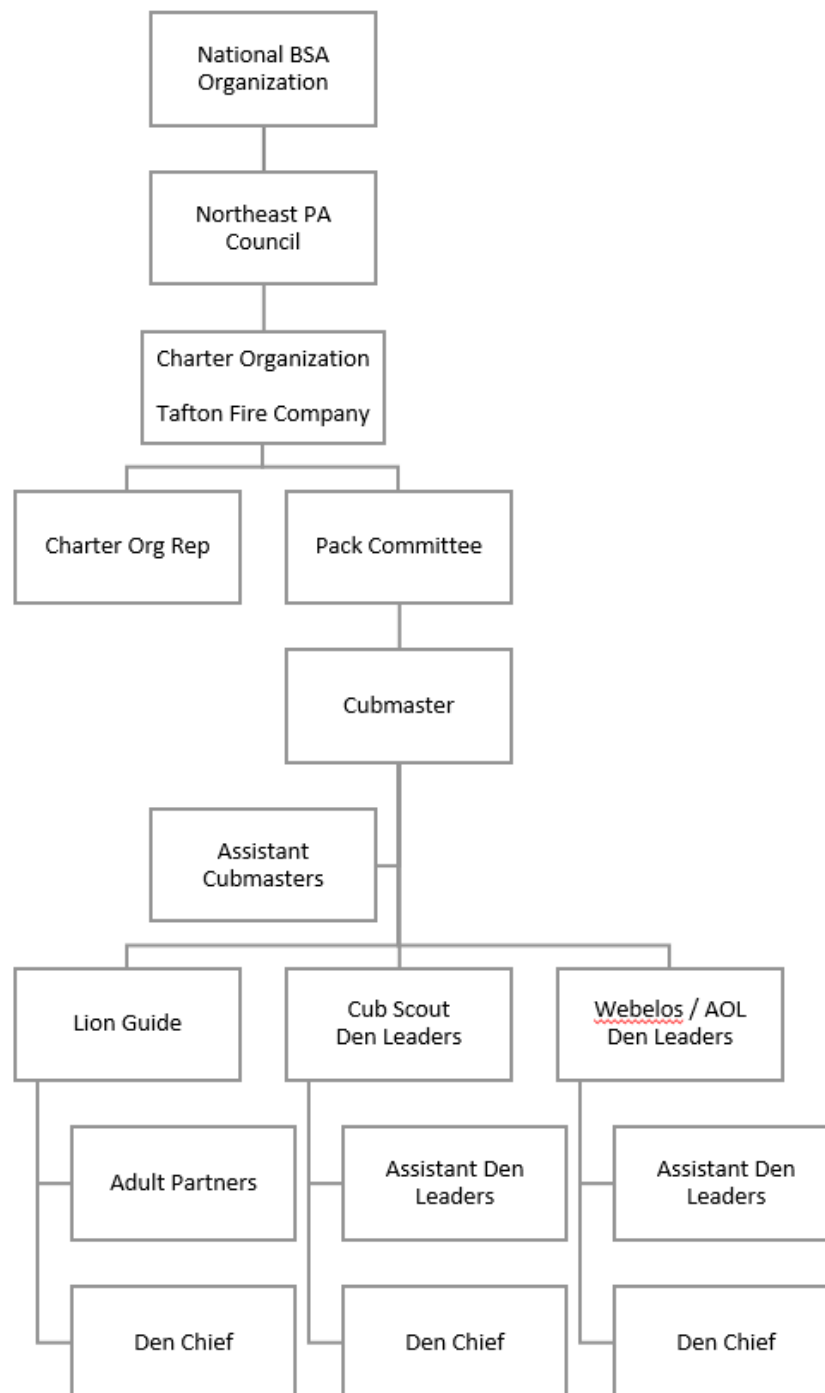
Parent Training

For parent volunteers who are not registered Leaders, we highly recommend that you take the Youth Protection Training, available free online at <http://www.scouting.org/Training/YouthProtection.aspx>. Once the training is complete, please print or email the certificate to the Cubmaster.

LEADERSHIP

Successful Leaders are people of character and honesty; people with the ability to guide and influence Scouts; people with pep, patience, tact and a sense of humor; people who have a sense of purpose and direction. Volunteer Leaders and Committee Members are always welcome!

The following leadership positions work for the benefit of the Pack and the Cub Scouts.



***NOTE:** In a perfect world, all of the positions listed above would be filled by the parents and leaders that make up the adult population of the pack. At times, the responsibilities of several positions are often filled by one leader or shared between multiple leaders. The pack should strive to follow this model as closely as possible, but in all cases, the responsibilities that are spelled out below must be carried out by the leadership.*

The current Leaders are posted on the Pack's website (<https://www.wallenzaupackcubs229.org/leadership/>).

A list of qualifications and responsibilities for these positions are available upon request.

LEADER TRAINING & CLEARANCES

All registered Leaders and Committee Members are required by the BSA to take various training, which can usually be done online. This typically consists of Youth Protection Training and additional trainings specific to their position.

Additional trainings may be required for certain activities – for instance, any camping event requires at least one Leader with BALOO (Basic Adult Leader Outdoor Orientation) training.

The Pack Trainer, Committee Chair, and Cubmaster will ensure that the appropriate training has been taken by each Leader.

All registered Leaders (and camp chaperones) are also required to submit state and federal background checks and clearances. These need to be kept up to date and it may be necessary to renew them *before* their expiration date, based on Council rules, so that they do not expire in the middle of the year.

MEETINGS

Den Meetings

Den meetings are held weekly – typically three times per month – for each Den, except the Lion Den which has one Den meeting per month. These occur from September through April (May meetings are at the discretion of the Den Leader, in cooperation with Den families – some Dens choose to meet during May and some don't, due to sports and other scheduling conflicts).

These meetings help to instill and promote a sense of teamwork and camaraderie among the Den members. Additionally, they are used as a means to help advance each Scout towards his ranks in a group environment. The meetings are used to supplement, not replace, the work which is accomplished at home with a Scout's parents.

The Den meeting schedule is posted on the Pack's website (<http://wallenpaupackcubs229.org/calendar/>) and on Scoutbook.

Pack Meetings

Pack Night is one of the best opportunities to interest and involve families of the Scouts. A well-attended Pack Night shows both the Scouts and the families that they belong to a successful organization thus promoting active and enthusiastic family involvement which is vital to the success of a Pack.

Reasons why Pack Nights are important:

- They give the Dens an objective to work toward
- They build enthusiasm on the part of Scouts and families
- They are an excellent means of developing family participation and cooperation
- They help the Scouts feel they belong to something larger than their own Dens
- They provide a regular opportunity for advancement and other recognitions
- They provide information on upcoming events and other important information

Pack Nights are usually held on the third Friday of each month from September through May. The meeting starts at 7:00pm at the North Primary School Cafeteria (refer to the current Pack calendar for any changes in time and location). Some months, Pack Night is replaced by another Pack activity, like the Pinewood Derby or the Blue & Gold Banquet.

Families are encouraged to participate in meeting activities such as games and songs. If Scouts and siblings do not want to participate in the pack game/song, they must remain seated quietly and must not disturb the group. All parties must remain in the cafeteria during Pack Night and must not loiter in the halls, gym, etc.

When announcements are being made and awards are being presented, please show respect by remaining quiet. There will be plenty of time for conversation and questions afterwards.

Each Den will take a turn 'hosting' the Pack Night. The Host den should show up approximately 20 minutes prior to the start of Pack Night to help set up. The Host den will also bring refreshments for the fellowship table. The Host den will stay until everything is cleaned up and dismissed by the Cubmaster.

The Pack Night schedule is posted on the Pack's website (<http://wallenpaupackcubs229.org/calendar/>) and on Scoutbook.

CAMPING

The camping and outdoor programming gives Scouts the opportunity to experience the outdoors and helps prepare for their Scouting career. It also helps to build self-confidence, friendship and Scout spirit. The Scouts are encouraged to participate in as many camping opportunities as possible.

Outdoor activities are required for all ranks. Under the updated rank requirements, camping is not required for advancement, but is encouraged as one option for an outdoor activity. All Cub Scouts attending camping trips are required to have a BSA Health Form on file with the Pack.

Camping supplies can usually be borrowed or provided for all events. Most events require only a sleeping bag/blanket, rain poncho, and a flashlight.

COMMUNITY SERVICE

Service, best exemplified by the daily Good Turn, has long been a tradition in Scouting. Good citizenship is best taught by service in action.

To get the most Cub Scouting has to offer, Scouts will have opportunities to take part in Den and Pack service projects. This is one of the best ways to show that helping other people is not only beneficial to others, but is fun and rewarding.

Community Service is required for Rank Advancement.

AWARDS & ADVANCEMENT

Every Den works toward one rank each year. Each rank is made up of multiple “adventures” and other requirements that a Scout must fulfill in order to earn their badge of rank. Besides rank advancement, the Cub Scout program has many optional pins, badges, and awards for different achievements.

To track advancement and awards, the Pack uses the Scoutbook website. It is the parent’s responsibility to ensure that their Scout’s achievements are logged in Scoutbook each month, at least one week before Pack Night. The Den Leader will then approve these items, which will then be distributed at Pack Night. Items that are not entered or approved on time will be held until the next Pack Night.

If there is ever a concern about eligibility of a Cub Scout for any award or a question about requirements, the matter should be directed first to the Den Leader and then to the Cubmaster.

These matters should be discussed in private, not in the presence of Scouts. Please note that advancement and award requirements are set by the national BSA program.

As there is a significant cost to the awards that can be earned, the Pack will cover the cost of items that are required for advancement (i.e. adventure belt loops or pins and rank badges). For additional items, a card will be given to the Scout, recognizing their achievement and the family will have the option to purchase the award from the Scout Shop. One exception to this is the Cyber Chip award – while this is a part of the advancement requirements for each rank, the Pack has decided to purchase the card only, while the family can choose to purchase the extra patch, if desired.

The Scout Year runs from June 1 to May 31. As of June 1, any activities performed count towards the next school year. For example, a child who is finishing 2nd grade will be considered a ‘Bear’ as of June 1 of that school year.

FINANICAL AID and CAMPERSHIPS

Scouting is for ALL youth and every attempt is made to work with every financial situation. If there are financial concerns that you feel may impact your Scout’s participation in the program, please speak to the Cubmaster or Pack Committee Chair.

Financial aid may be available from the Northeast Pennsylvania Council, depending on fund availability. This aid is used for reduced dues and discounts on uniforms and books. Information on applying for financial aid is available from the Cubmaster.

The Pack provides various fundraising opportunities. The majority of our fundraising campaigns provide funds directly to the Scout Accounts of those who participate, based on the amount they sell (i.e. popcorn or candy bars) or the hours that they work at the fundraiser (i.e. a bake sale or car wash). Please note that some fundraising events may be designated as specifically for the Pack or a specific goal (i.e. purchasing camp equipment). This will be clearly specified before you sign up for the fundraiser.

It is expected that the Cub Scout and Parents receiving the help should put forth effort during fundraisers and service to the Pack. The requesting Scout must be an active participant (at least 80% attendance).

The following guidelines will be used when financial aid is requested:

- Requests for aid will be directed to the Cubmaster or the Pack Committee Chair. All requests are kept confidential.
- Requests should be made as soon as the need is realized, but in no event less than two weeks prior to the need. Certain events, such as summer camp, may have a specific

financial aid deadline, which will be clearly communicated. Adjustments to these dates cannot be made.

- There is no guarantee of financial assistance availability.
- Financial assistance discounts may have an expiration date (i.e. if the discount is not used within a set period of time, it may be forfeited and you will have to re-apply).
- Requests will be granted on a first come, first serve basis.

Parent Handbook Acknowledgement

I, the undersigned, hereby certify that I have received the Parent Handbook for Cub Scout Pack 229 and do, by virtue of my signature, agree to abide by it for the duration that we are members of Cub Scout Pack 229.

Scout Name(s) (Please Print)

Parent/Guardian Name (Please Print)

Parent/Guardian Signature

Date

Received by Cubmaster or Committee Chair

Date